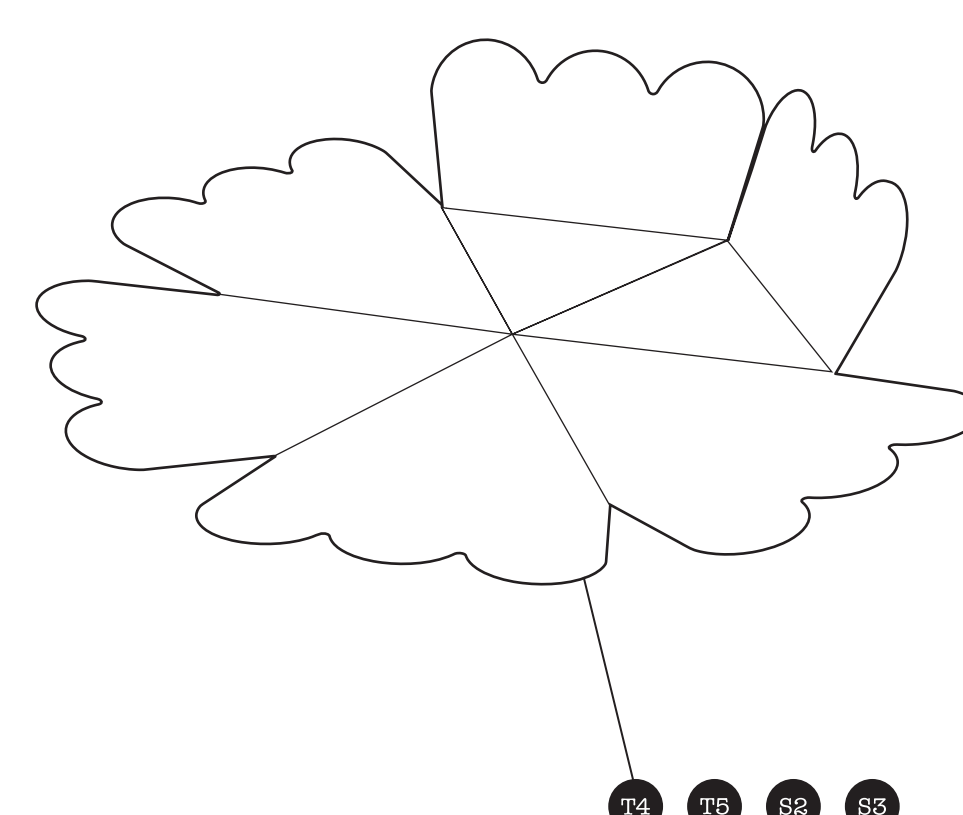
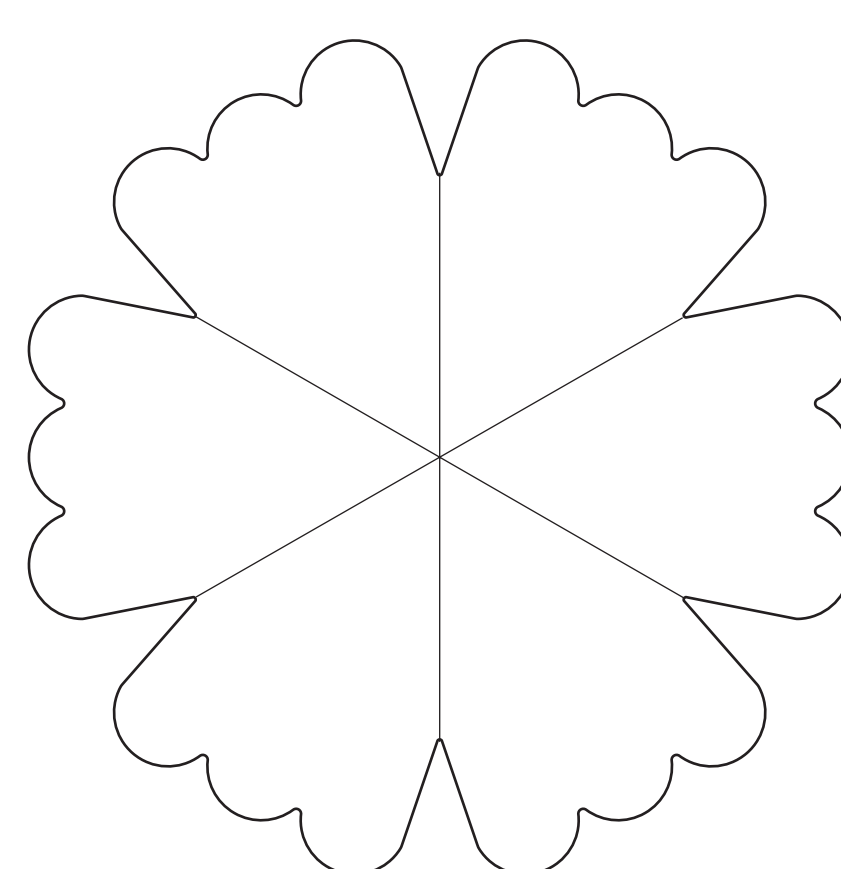
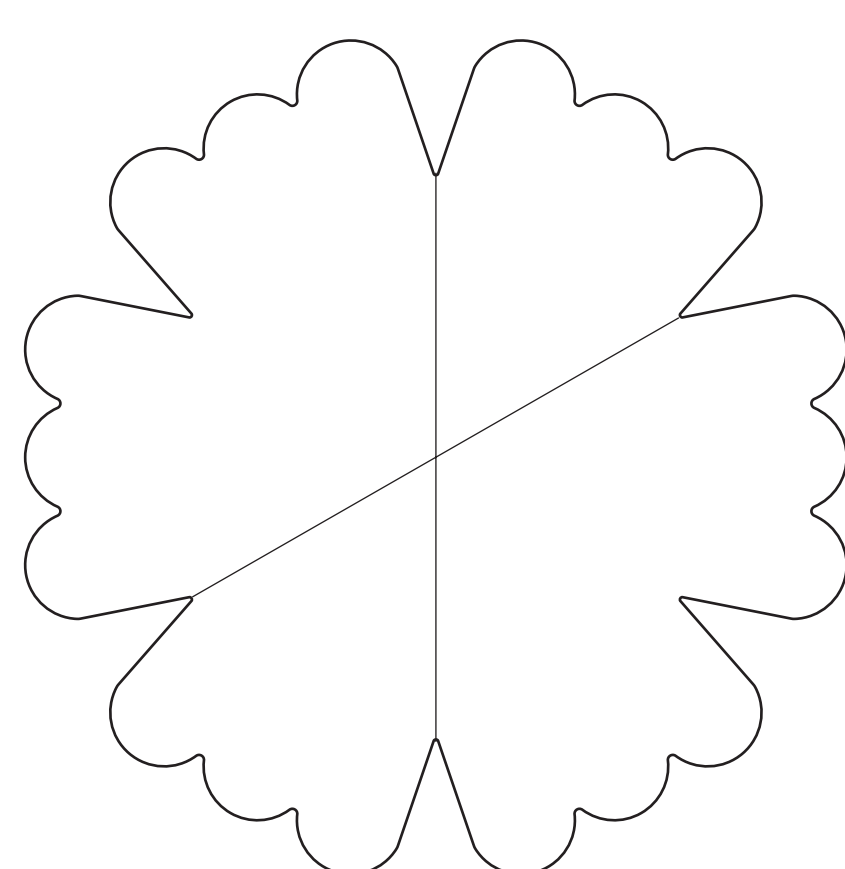
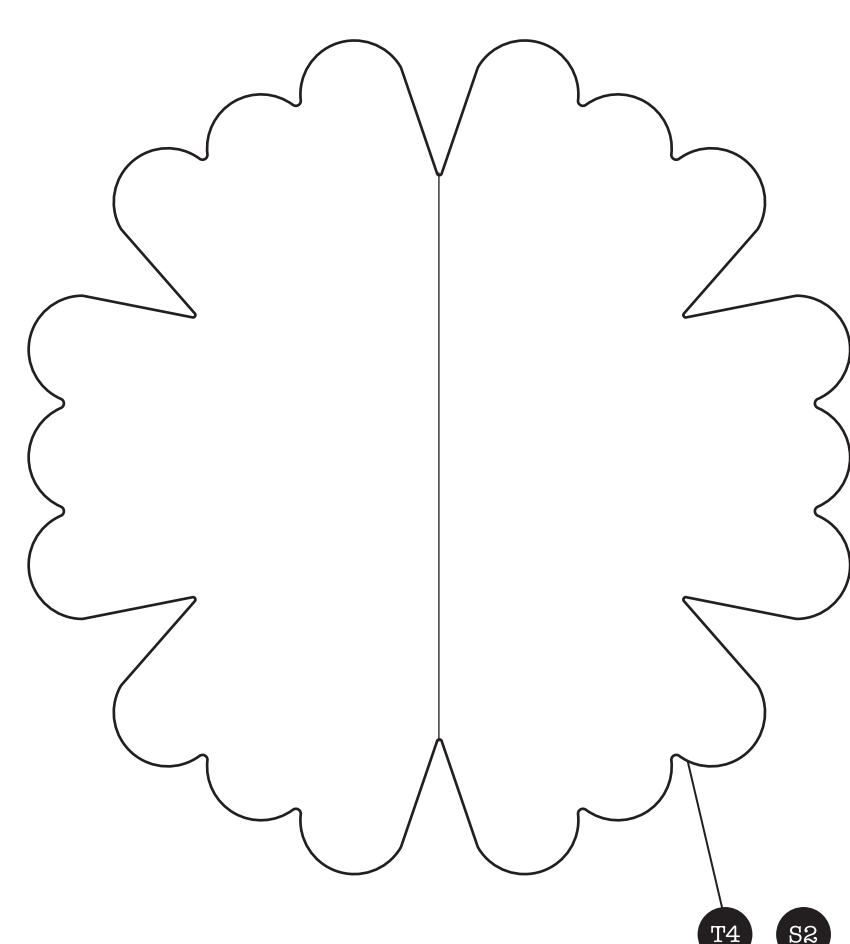
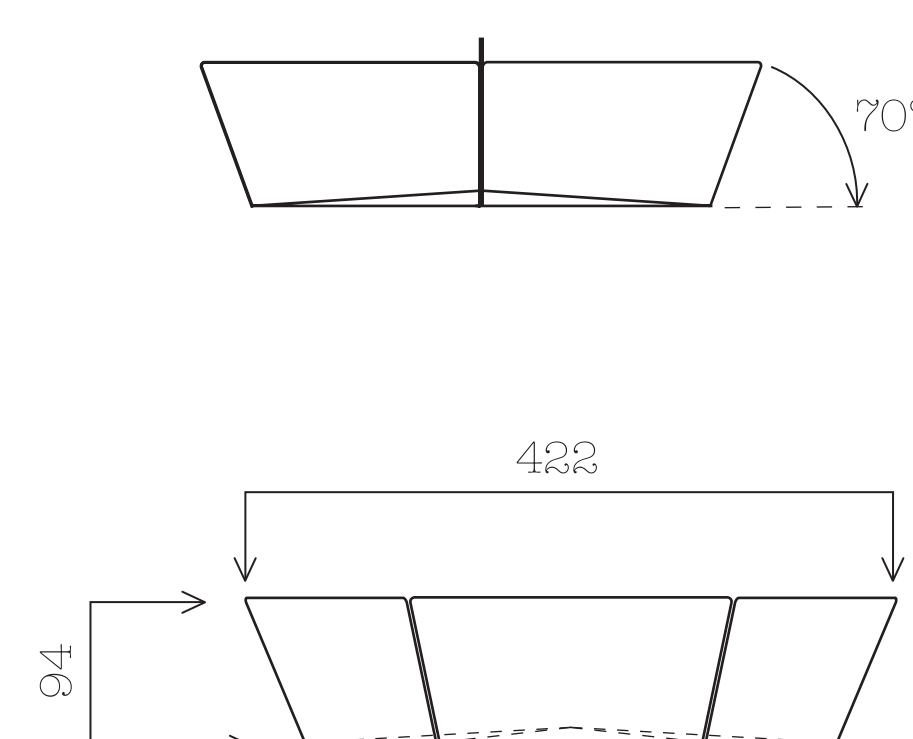
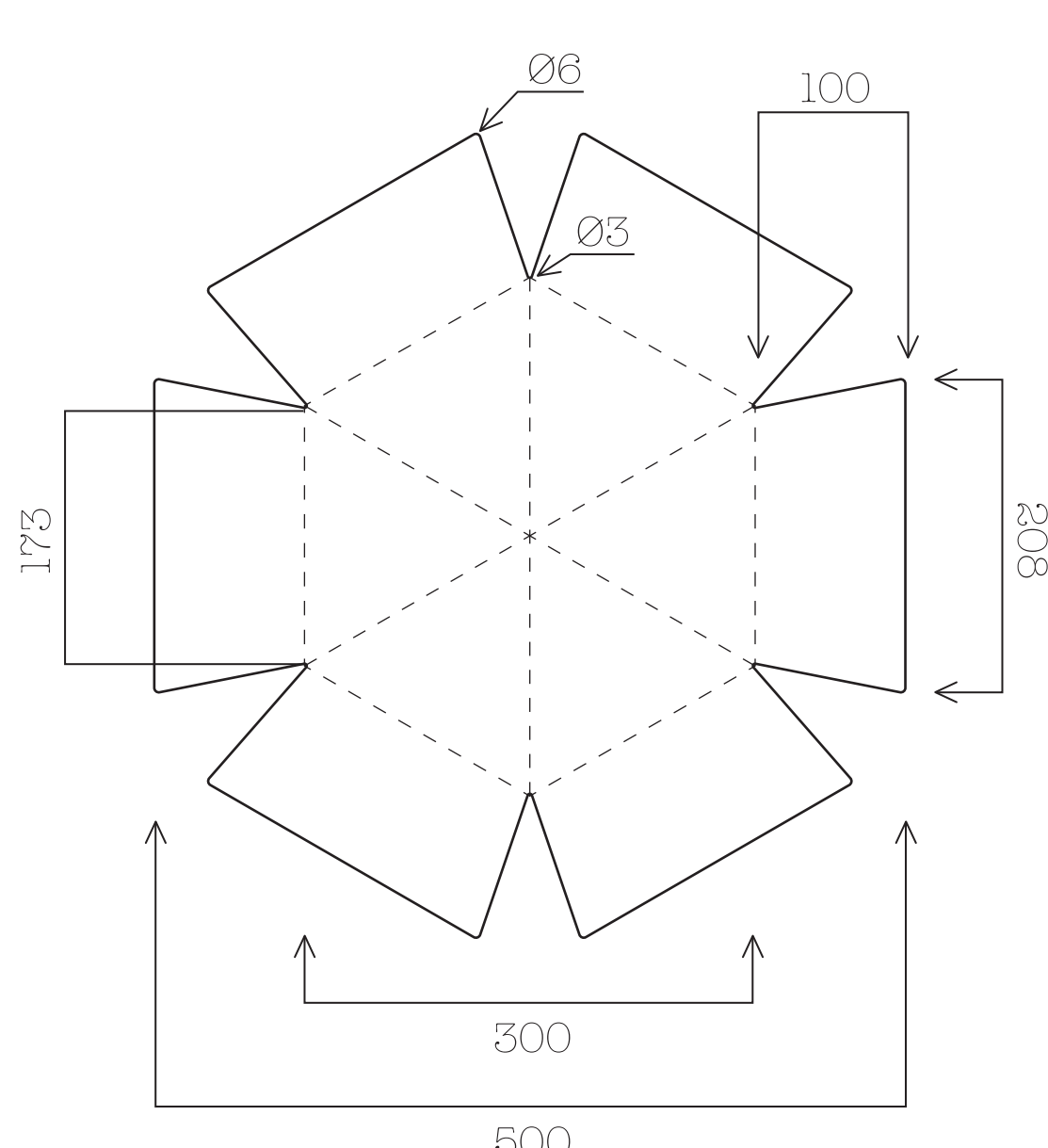
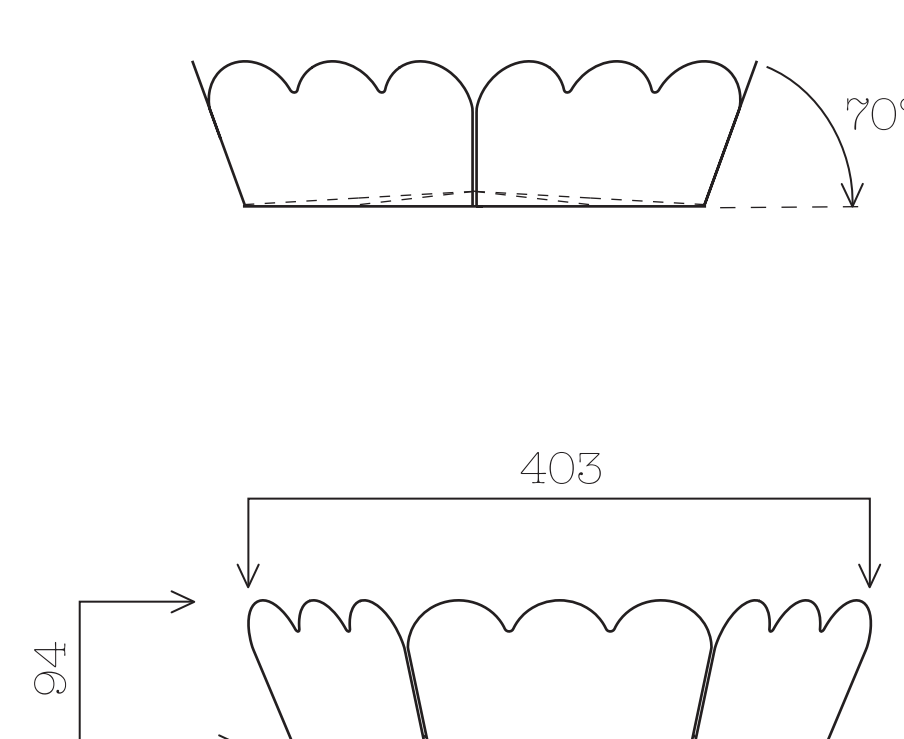


Technical drawing of a six-petaled flower. The overall width is 500 and the overall height is 300. The petals are arranged in a circular pattern. Dimensions for the petals are: top-left petal width 68, top-right petal width 100, left petal height 173, and right petal height 197. A central dashed circle has a diameter of 232. The drawing is divided into six sectors by dashed lines.



A. A sheet metal part cut out with laser / water jet / a saw is bent gradually under the angle of 5° to form an envelope. Then, the protruding parts are bent to touch each other - approx. 70°. /see the illustration/. The resulting product is finished with a file and painted.